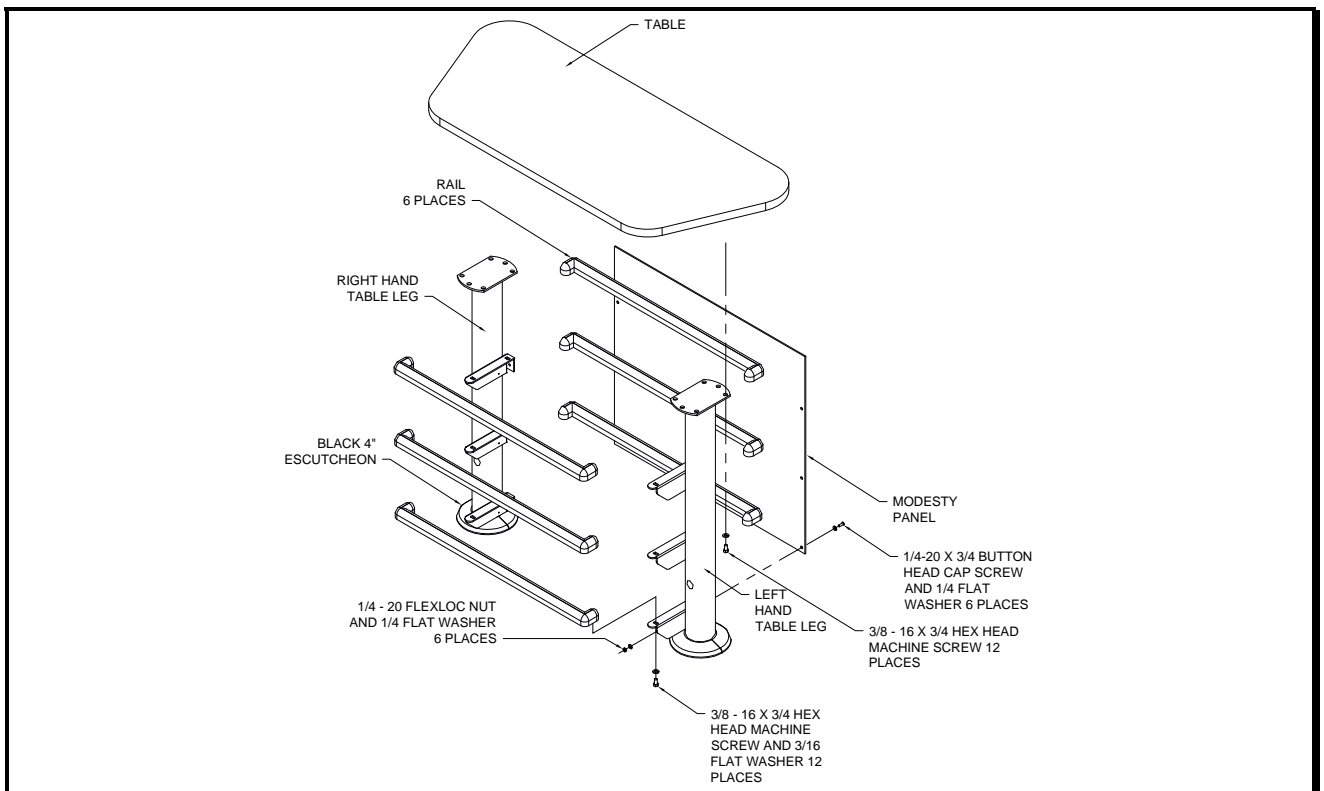
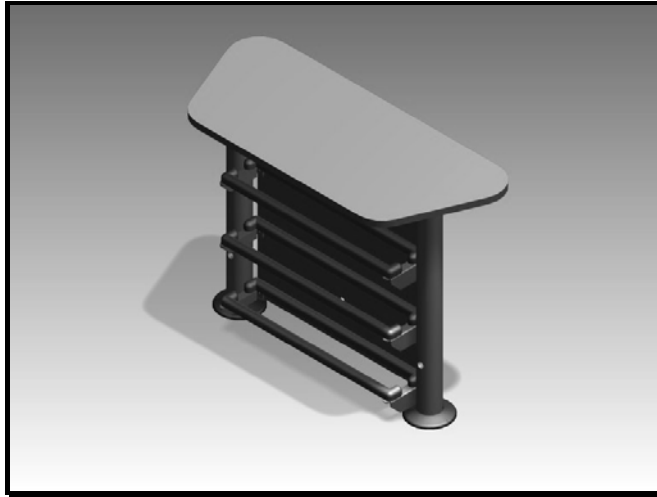


# EBONITE VANTECH™

## Assembly Instruction – Divider Table – Middle Trapezoid 30-5302



**Assembly Exploded View**

## Tool List

3/8" drive Socket Wrench

Socket – 1/2", 9/16"

Allen Wrench – 5/32"

Box End Wrench – 1/2"

## Table Assembly Procedure

Use the Assembly Exploded View drawing as a guide while performing the following instructions.

Some steps of this assembly process are easier when two people are available.

Finger tight means snug and then back out ¼ turn.

1. Place the table top upside down on a piece of cushioning material (like the box it came in).
2. Stand the table legs on the bottom of the table over their mounting holes. Make sure that the Ball Rack brackets are toward the inside and the extended part of the brackets are toward the front edge of the table.
3. Insert the 6 screws through the mounting flange on each leg and tighten finger tight.
4. Mount the 6 Ball Racks and tighten the screws finger tight.
5. Mount the Modesty Panel. Tighten the hardware finger tight.
6. Now, tighten the screws holding the legs to the table and then, proceed to tighten all of the hardware inserted in the previous steps.

**Caution:** At this stage the Table Assembly will not be stable and should be supported by another person until you perform the following steps.

1. Turn the Table Assembly right side up and put it close to the place where it will be attached to the floor.
2. Holes are provided on the flanges at the bottom of the table and seat legs. You must attach the unit to the floor using these holes and hardware appropriate for your type of floor.
3. After bolting the unit to the floor, twist the Escutcheons and place them around the legs. Push them down to cover the flanges.

